

# SECURE ISLANDS DATA INTERCEPTOR FOR OPENTEXT

## ABOUT OPENTEXT

OpenText is an Enterprise Information Management (EIM) system. Designed to help enterprises get the bigger picture of their big data and analytics by streamlining organizational workflows, OpenText increases the quality of information and creates integrated user interfaces for end users.

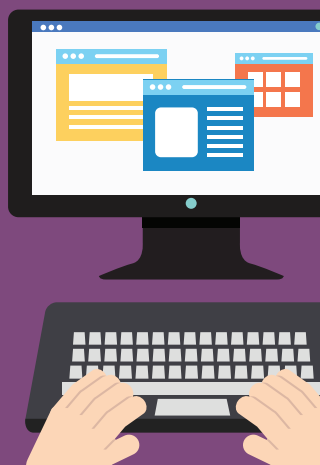
## INFORMATION PROTECTION CHALLENGES WITH EIS SYSTEMS

Users working with OpenText can check out relevant documents from the system, modify and collaborate with others, then check the document back into the system for secure storage and archiving. However, once a file leaves OpenText, there is no control over who accesses, uses or modifies its content. Data can be easily misused or leaked by trusted users, either maliciously or accidentally.

## SECURE ISLANDS DATA INTERCEPTOR FOR OPENTEXT

Secure Islands Data Immunization concept focuses on the data itself, rather than trying to control the users, channels or storage. Uniquely embedding persistent classification and protection within the data itself at the moment of creation or initial organizational access, IQProtector ensure that the data – not the perimeter – is protected. To immunize data as close as possible to the point of creation, Secure Islands' Interceptor for OpenText instantly identifies, classifies with persistent tagging, protects and tracks new or legacy data in OpenText as it enters or exits the system to a given end-user – inside the organization or when shared with business partners. The interoperability with OpenText provides end users simple visibility to the file's classification, through the classification column in their folder.

Running inside the content management system, OpenText Interceptor seamlessly and accurately classifies and protects files on access – completely independent of the device or platform accessing the file. At the same time, protected data remains fully indexable and searchable within OpenText, driving productivity.



## HOW DOES THE OPENTEXT DATA INTERCEPTOR WORK?

The Secure Islands “data interceptor” module is installed on an OpenText platform, inspecting any file being checked in to the system (uploaded) or any file being checked out (downloaded) from the system.

Upon file upload or download event, the OpenText Data Interceptor sends information to the Secure Islands’ classification and protection engine. This data includes rich information about the file such as its name, type, location, information about the user who performs the operation and additional document properties from the EIS system such as OpenText classification.

In its turn, Secure Islands’ Classification and Protection Engine scans the file in order to enforce the organizational classification and protection policy.

Last – the original file is replaced by a classified & protected file that meets the business policy.

The classification and protection engine runs inside the OpenText server and is completely independent of the user or who are accessing the file. This allows, any user and any device type, whether managed by the business or not, to work in a secure environment that classifies and protects data while in motion.

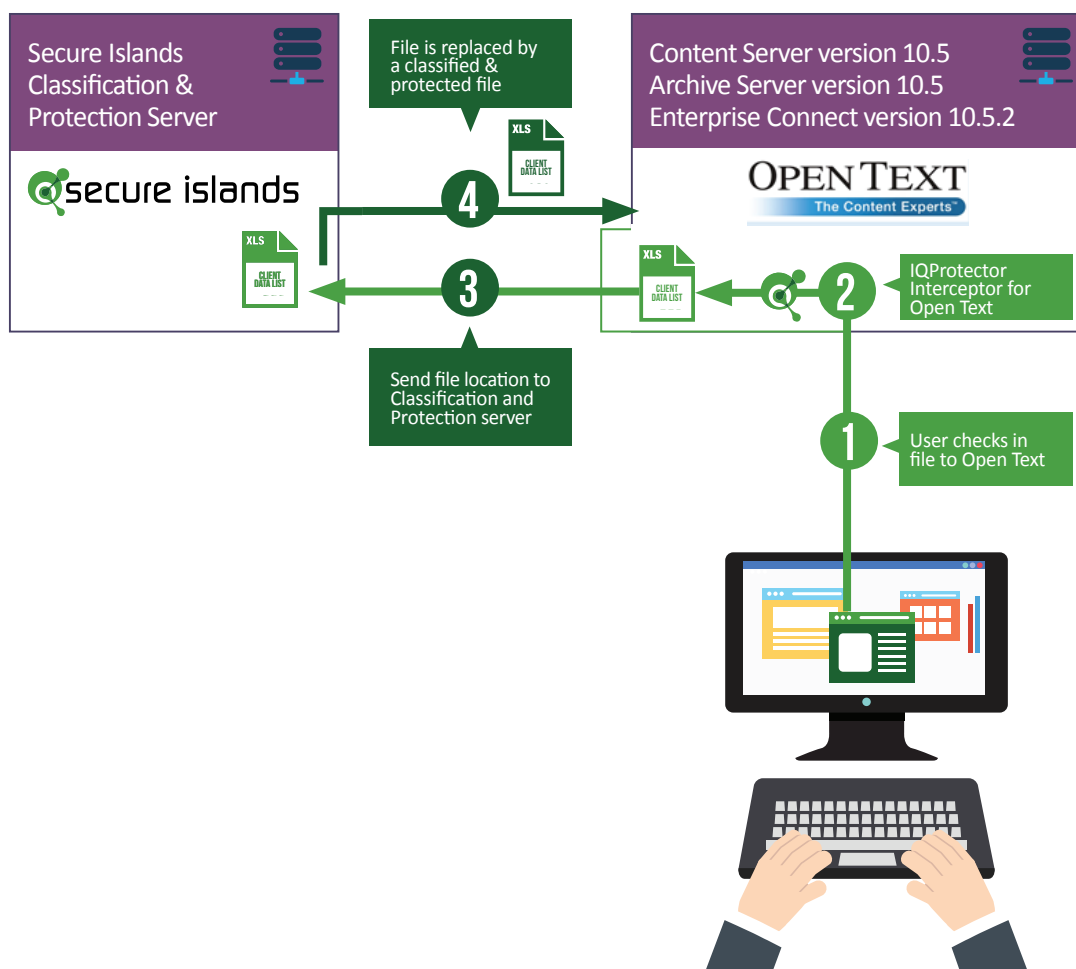


Diagram 1:

A basic user flow working with a document stored in OpenText

## SIMPLE TO SET-UP AND CONFIGURE

The Secure Islands for OpenText Data Interceptor can be installed in a simple manner on any supported OpenText platform. Configuration is done in a few short steps using the OpenText Content Server Administrator Console.

Data Interceptor Options	
Interceptor options to enable or disable integration functionality.	
<b>Data Interceptor:</b>	<input checked="" type="checkbox"/> Check to activate data interceptor.
<b>IQProtector classifications integration:</b>	<input type="checkbox"/> Use IQProtector classifications in Content Server classifications tab.
<b>Allow file transfer on error:</b>	<input type="checkbox"/> Allow file transfer when communication with IQProtector is down or upon error.
IQProtector Connection	
IQProtector web service connection information.	
<b>IQProtector Web Service URL:</b>	<input type="text" value="iqp.my-company.com"/>

Diagram 2: Secure Islands' Data Interceptor configuration screen, in the OpenText Content Server Administrator Console

The Secure Islands classification & protection server enforces the organizational information protection policy. Additional classification and protection rules, or existing information protection rules can be immediately enforced by the OpenText data interceptor.

**Rule**

General Match Action

**Matches**

Add Remove Remove all Match if any trait is met (OR)

Type	Name	Options
Information profile	Data Check Out from the Financial Folder	Edit

AND

**Interceptors**

Add Remove Remove all Match if any trait is met (OR)

Interceptor	Events
OpenText Content Management	Web download

Diagram 3: Secure Islands IQProtector management console - an example of a classification rule for for Secure Islands' Data Interceptor for OpenText: classifying any data being checked out from the financial folder at OpenText



## FEATURES AND BENEFITS

- Highly accurate classification and persistent protection of sensitive content inside the OpenText environment to immunize sensitive content: from the moment of the file check-in or check-out and throughout the entire data lifecycle.
- Persistent data classification inside OpenText and OpenText; Interoperability with OpenText to display the file's classification in a classification folder.
- Platform-agnostic – enables classification and protection of content accessed from OpenText by any platform, requiring no agent pre-installation. Provides a blanket protection of sensitive content enterprise wide and allows secure collaboration with business partners and data usage in BYOD environments.
- Seamless access to encrypted content by trusted apps and services makes for easy assimilation and implementation into the organizational business processes.
- Central management and central reporting and analysis allows data tracking both inside and outside OpenText. Analytics allow the system administrator & data owners the ability to track data classification, data location by classification, access to data and data sharing inside and outside the business.

## OPENTEXT DATA INTERCEPTOR SPECIFICATIONS

### OpenText platforms

- Content server version 10.5
- Archive server version 10.5
- Enterprise connect version 10.5.2

### OpenText server platforms:

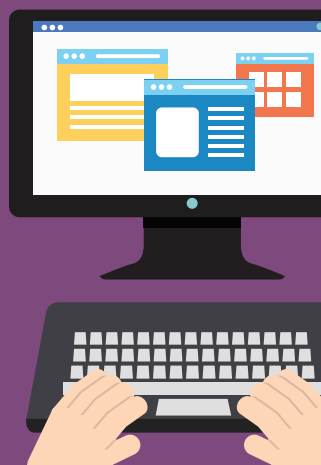
- Microsoft Windows Server 2008 R2 64bit
- Microsoft Windows Server 2012 R2 64bit
- Oracle database 11g Enterprise Edition Release 11.2.0.3.0 64bit
- Microsoft SQL Server 2008 / 2012

### Secure Islands version:

- IQProtector 5.0 and above

### Data awareness for the Secure Islands' classification and protection server:

- File name and type
- File location and path to file
- Operation type: upload (check in) or download (check out)
- User name and user/group properties of the user who uses the file
- Custom properties - reflecting open text categories and classifications



## ABOUT SECURE ISLANDS

Secure Islands develops and markets advanced Information Protection and Control (IPC) solutions for the borderless enterprise. Offering policy-driven classification and protection for unstructured data, Secure Islands lays the foundation for sensitive information security in enterprises as they shift from perimeter defense to persistent protection. Secure Islands' holistic approach literally redefines information security and assists the enterprise in regaining control by identifying, classifying and protecting sensitive information throughout its lifecycle. Founded in 2006 and headquartered in Israel, the company's solutions are deployed in top-tier Fortune 500 firms and government agencies worldwide. For more information, please visit [www.secureislands.com](http://www.secureislands.com).

