

Boldon James Power Classifier

Mass Security Labelling for Documents and Files

Classification provides a means for organisations to organise and extract value from unstructured information. Most organisations already possess a substantial legacy of unstructured data and the Big Data phenomenon has resulted in an exponential rise in the volume of such information flowing into a business on a daily basis.

Boldon James Power Classifier meets this challenge by providing the means to classify and label large sets of static information as well as applying classification dynamically at the point of capture. Power Classifier applies relevant metadata labels to any file held in Windows® file store. The Power Classifier tools can be operated by key knowledge workers, invoked as part of automated tasks or controlled directly by other applications, such as Data Governance tools.

Key Benefits

- ▶ Adds meaning to unstructured information
- ▶ Caters for legacy documents and files
- ▶ Automates routine classification tasks
- ▶ Improves quality of Data Governance
- ▶ Empowers Enterprise Search and e-Discovery
- ▶ Enhances Data Loss Prevention and Archiving

Classification and labelling enforces an organisation's rules on handling and release of information, ensuring the consistent behaviour of other security and compliance technologies such as data loss prevention (DLP) and archiving.

The result is increased user awareness of the sensitivity of information, the ability to provide evidence that applicable regulations have been met and the opportunity to boost the return on investments in encryption, archiving & storage, e-discovery and DLP.

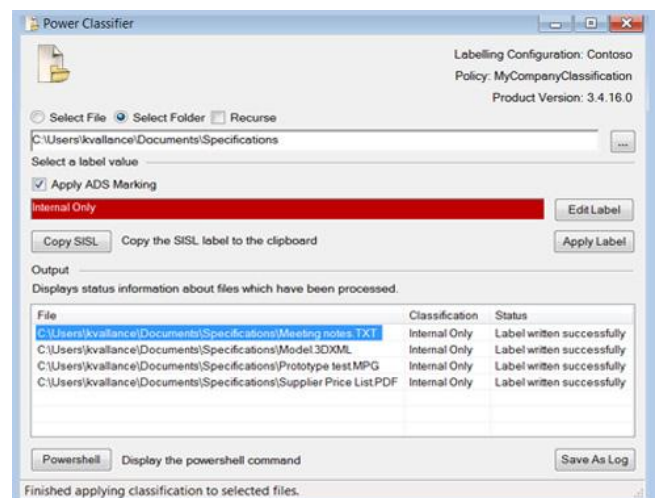
Power Classifier is provided as part of the Enterprise Edition of the Boldon James Classifier suite. The Power Classifier toolkit complements Enterprise Search and Data Governance tools by providing the final stage in the *Locate - Organise - Classify* process for handling unstructured information. Other information capture processes can use the Power Classifier tools to classify data at source. The toolkit includes an interactive Windows® application, a console application for Windows® command shell and an extension to Windows PowerShell®.

Windows PowerShell® is a task-based command-line shell and scripting language designed especially for system administration.

Features

- Interactive Mass Labelling
An interactive Windows® tool enables easy selection of files and folders for labelling, including options to label entire folder structures. Label selection can be made using the familiar user interface common to all Classifier products or by cloning the label of a target file.

Fig 1: Interactive labelling of a set of information assets



- Easy Integration
A console application allows for labelling activity to be driven by Windows command shell scripts and for third-party applications to easily invoke labelling actions. The output from an Enterprise Search tool can be fed directly into the console application in the form of a file list, completing the final step of a *Locate - Organise - Classify* process.

- **Powerful Scripted Tasks**
Power users and administrators can use a set of PowerShell labelling commands to create and perform complex scripted actions as part of routine or automated tasks. The PowerShell commands include operations to Get, Set, Clear and Remove labels. To enable scripts to be built quickly and with the minimum of expertise, the interactive Windows tool can be used to generate equivalent PowerShell script commands.
- **Label Any File**
Power Classifier, in common with File Classifier, can label any file accessible within Windows file store. The metadata labels added by Power Classifier can be recognised by other Classifier products, providing consistent information handling across the product range.
- **Embedded Metadata Labels**
Power Classifier either applies native metadata labels using document properties, in the same manner as Office Classifier, or uses a metadata location common to all Windows files. Labelling using this hidden metadata is completely transparent to the other applications that use these files.
- **Preserved File Properties**
Power Classifier has the option to preserve key timestamp information on the files that it labels, in order to ensure that the act of labelling remains transparent to other applications that operate on those files.
- **Enhanced DLP and Enterprise Archiving**
The metadata labels added by Power Classifier can be recognised by other metadata-aware systems such as Enterprise Archiving and DLP. By using the metadata label, DLP solutions can more precisely control the dissemination of information and minimise data leakage. Archiving solutions can use more granular retention policies to reflect the classification of stored information, for example to exclude non-business data.

About Boldon James

For over 20 years we have helped organisations with the most demanding communication requirements manage sensitive information securely and in compliance with legislation and standards.

Our solutions extend the capabilities of Microsoft core infrastructure products to allow secure information exchange and in 2006 we were elevated to Microsoft Global Go-To-Market Partner. Boldon James is a wholly-owned subsidiary of QinetiQ, with offices in the UK, US, Australia and Europe, and channel partners worldwide.

- **Improved Data Governance**
Data Governance applications can use the classification metadata applied by Power Classifier to accurately monitor and manage the information assets of the business. A Data Governance solution can also add or modify the labels on information assets by directly invoking Power Classifier tools.
- **Empowered Enterprise Search and e-Discovery**
Enterprise Search and e-Discovery tasks can use classification metadata to rapidly and more reliably identify critical information.
- **Unified Administration**
Power Classifier is configured using the Classifier Administration console in the same manner as all other members of the Classifier product family. Classifier Administration handles all policy configuration needs from simple to complex, ensuring that the solution can be implemented quickly and with the minimum of expertise.

System Requirements - Software

- Microsoft Desktop Operating System: Windows XP SP3 / Windows Vista SP2 (32 & 64-bit) / Windows 7 (32 & 64-bit) / Windows Server 2008 / Windows Server 2008 R2
- Applications: PowerShell 2.0

Associated Products

Power Classifier is used together with one or more of the following products:

- Boldon James Email Classifier - labelling and control for Microsoft Outlook emails and messages.
- Boldon James Office Classifier - labelling and control for Microsoft Office documents, including Word, PowerPoint, Excel, Visio and Project.
- Boldon James OWA Classifier - labelling and control for Microsoft Outlook Web App.
- Boldon James File Classifier - labelling for all types of Windows® files.
- Boldon James SharePoint Classifier – labelling for Microsoft SharePoint® documents and files.