

## Boldon James OWA Classifier

### Labelling, Protective Marking and Release Control for Web-based Messaging

Email is the primary collaboration tool in most organisations, so it's no surprise that it's a common source of information leakage, with most data loss caused by user negligence. Boldon James OWA Classifier puts labelling at the heart of data loss prevention by giving users the ability to apply relevant visual labels to Microsoft Outlook Web App email messages and to embed labels within the email metadata.

#### Key Benefits

- ▶ Enforces information assurance policies
- ▶ Raises user awareness of security policies
- ▶ Enhances data loss prevention (DLP) measures
- ▶ Controls unstructured information
- ▶ Prevents internal and external data leakage
- ▶ Provides visibility of user behaviour and compliance position
- ▶ Zero desktop footprint and low administration costs
- ▶ Accessibility for low vision users
- ▶ High level of browser compatibility

OWA Classifier applies labels to enforce the organisation's rules on handling and release of email, enabling accurate invocation of downstream technologies such as gateway-based encryption or email archiving.

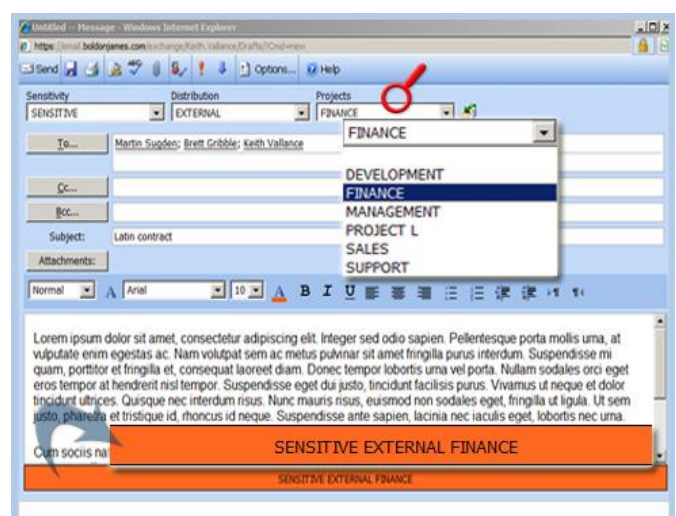
The result is increased user awareness of the sensitivity of information, the ability to provide evidence that applicable regulations have been met and the opportunity to boost the return on your investments in encryption, archiving & storage, e-discovery, DLP, information rights management and ERDMS.

OWA Classifier is fully integrated within Microsoft Exchange Outlook Web App (also known as Outlook Web Access), hence all messaging features and benefits are as standard, for example Folders, Sorting, Grouping, Contacts, Spell checking, Calendar, Tasks and so on. Boldon James OWA Classifier is the natural complement to Email Classifier which is focused on augmenting the Microsoft Outlook desktop client.

#### Features

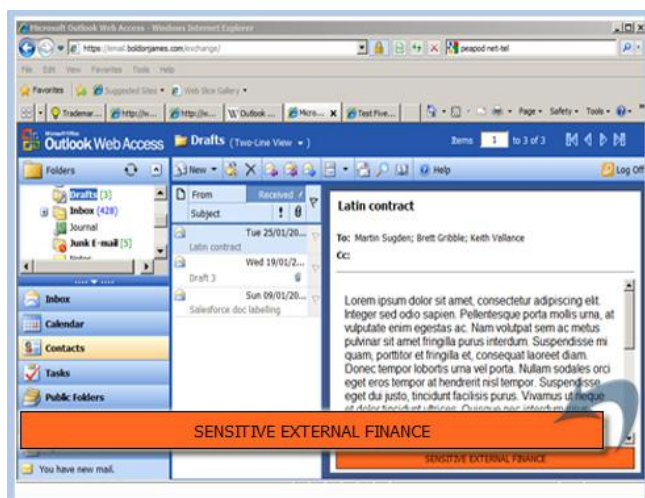
- **Classification Selector**  
OWA Classifier provides a simple, familiar drop-down interface from which users of Microsoft Outlook Web App select a classification label. Administrators can set options to force labelling on Send, Reply and Forward, thereby automating compliance with information assurance policies.
- **Visual Labels**  
OWA Classifier applies visual labels to email messages, raising user awareness of the value of the information that they are handling. Administrators can configure where the label will appear, possible alternate values and how the label is formatted - including font size, colour, prefixes, suffixes and delimiter selection.
- **Metadata Labels**  
OWA Classifier applies metadata labels to Internet x-headers, enabling email filtering, encryption and archiving technologies to take precise action based on label values. This provides a simple way to ensure consistent actions are taken by complex information security tools and offers an additional safeguard against data leakage.

Fig 1: Compose Email



- **User Clearance Checking**  
The Clearance Checking feature compares label values against sender and recipient clearance levels. Administrators can specify the level of information which particular users or groups can receive as clearances, thus controlling access to information in a granular manner and preventing inadvertent information leaks within an organisation.
- **Domain Clearance Checking**  
OWA Classifier checks label values against administrator-created email domain rules in order to ensure controlled distribution outside of the organisation.
- **Control of Endpoint Protection Tools**  
OWA Classifier allows administrators to set rules based on label values that can invoke S/MIME encryption and digital signing. This leverages existing investments in S/MIME security systems, aids their adoption and ensures consistent use.
- **High Watermark Check**  
Where a user includes within an email a document labelled by Boldon James Office Classifier then OWA Classifier will ensure the message and document labels match, providing a dependable approach to information dissemination.
- **Message Attachment List**  
OWA Classifier can append details of attached files (including file name and any security label) to the bottom of an email, to provide reviewers with the attachment history, maintaining their awareness of original content, even when printed.
- **Embedded Content Checks**  
OWA Classifier will check nested content attached to messages, whether it is inside another email or a zipped file. This deep analysis prevents policy violations by ensuring that even complex content is subject to a consistent level of control.

Fig 2: Preview Pane

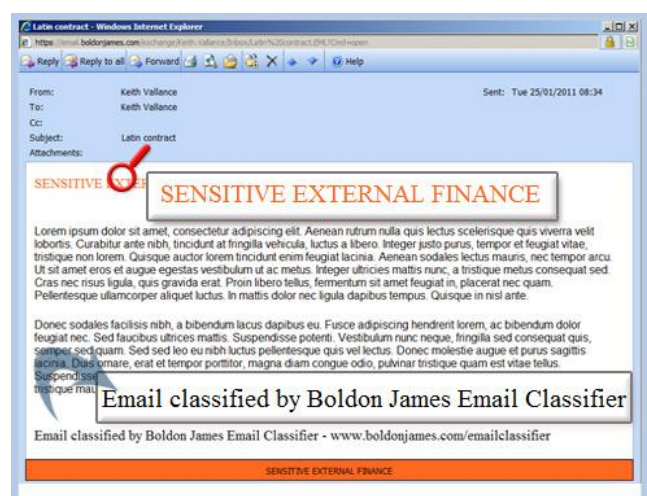


- **Unified Administration**  
OWA Classifier shares unified administration with other Classifier products via the Classifier Administration

console, which handles policy configuration needs from simple to complex, ensuring that the solution can be implemented quickly with the minimum of expertise.

- **Interface Choice**  
In order to support the broadest range of usage scenarios OWA Classifier supports both the Light and Premium interfaces of Microsoft Outlook Web App. The Light interface is also known as the Basic interface.
- **Accessibility**  
OWA Classifier supports the Light interface of Microsoft Outlook Web App which includes accessibility features recommended by Microsoft for blind and low vision users, such as those using screen reader technologies.

Fig 3: Visual Marking



- **Platform Compatibility\***  
A wide range of commonly deployed Microsoft Exchange platforms is supported including Exchange 2003, 2007 and 2010.
- **Auditing**  
Administrators can specify which events are audited to the Windows event log, providing visibility of user behaviour and compliance to security policies.

## System Requirements – Software\*

- **Desktop Browser:** Microsoft Internet Explorer 7 onwards / Firefox 3.0.1 onwards / Chrome 3.0.195 onwards
- **Exchange Server:** Exchange 2003 SP2 / Exchange 2007 SP3 / Exchange 2010 SP1
- **Server Operating System:** Windows Server 2003 SP2 / Windows Server 2008 SP2 / Windows Server 2008 R2

\* Note that not all features are available on all platforms, please check for details

## Try Before You Buy

Evaluations are available for this product. Contact your Boldon James representative or visit:

[www.boldonjames.com](http://www.boldonjames.com)