

## Boldon James Classifier Administration

### Managing Labelling and Protective Marking Across Your Organisation

Classifier Administration is a unified management console for defining and applying Labelling policies to any part of your organisation, enabling these policies to operate at the heart of your data loss prevention strategy. The console is provided with the Boldon James Email Classifier and Office Classifier products. With a familiar Microsoft Management Console (MMC) interface, Classifier Administration allows you to rapidly establish and control every aspect of your Classifier products, from simple departmental labelling policies to the diverse asset handling needs of different communities and projects.

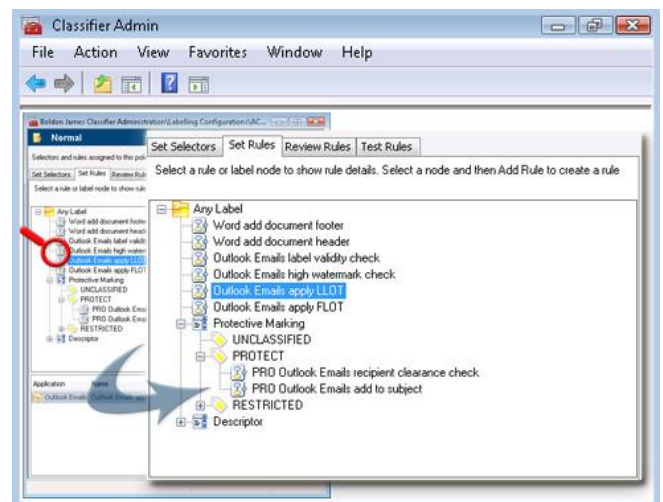
#### Key Benefits

- ▶ Helps establish and evolve asset labelling and information security policies
- ▶ Supports security collaboration with other organisations
- ▶ Aids controlled deployment of labelling policies to targeted communities
- ▶ Allows co-ordinated management of multiple policies
- ▶ Provides rapid 'time to benefit' thanks to simple set-up
- ▶ Represents a low training overhead for administrators
- ▶ Offers a high-level of IT infrastructure compatibility

#### Features

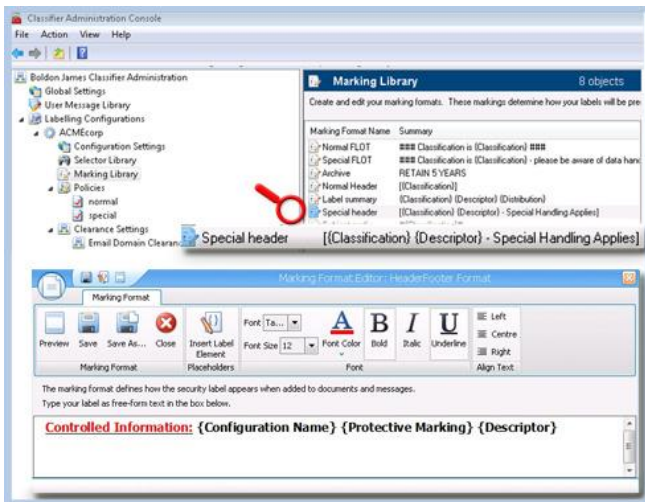
- **Single Point Administration**  
Classifier Administration provides a single point administration console for all the features of the Classifier products, via a familiar Microsoft Management Console interface, allowing for the rapid set-up and management of your labelling and asset handling policies. Policies define the labelling selectors offered to end-users and the content of feedback dialogues, the visual and metadata markings applied to documents and emails, plus the rules that control the application of markings and related checks. The console also incorporates full configuration of the label-based clearances that can be applied to individual users and email domains.
- **Built-in Policy Templates**  
Built-in policy templates are provided as examples of common labelling needs (e.g. UK GPMS, US CUI) to enable quick start configuration, which allows a basic policy to be established within minutes.

Fig 1: Policy Rules - Setting



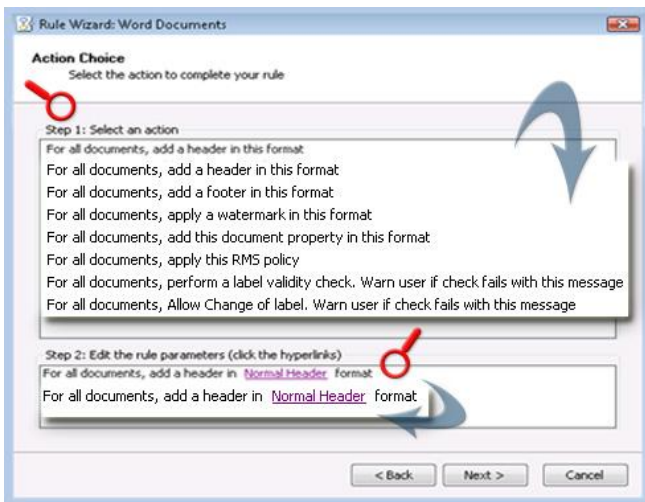
- **Policy Workflow**  
Supports a familiar policy management workflow of Define → Refine → Test → Publish, with policy 'lifecycle' understanding, for example, managing label values from creation through to retirement. A series of policy views allow you to easily review and interrogate your policy rule set.
- **Easy-to-understand Rules Structure**  
The Classifier products provide for a flexible range of actions based on labelling. The Classifier Administration console features a graphical decision tree representing rule logic which provides a clear representation of simple cases though to complex conditions.
- **Familiar Configuration Tools**  
The Classifier Administration console includes a rich text editor for managing visual markings with full previewing and wizards for all key configuration steps, allowing the administrator to get started quickly with almost no learning curve and no complex syntax to learn.
- **Per-community Policies**  
Policies can be bound to existing group definitions which allows you to target any community size - from pilot group to full organisation, ensuring a perfect match to your organisation as your requirements evolve.

Fig 2: Marking Library



- **Multiple Policies**  
Multiple policies can be created and deployed to reflect specific community needs and provide a best-fit mapping to your organisation. These policies share common definition libraries and all are managed as a co-ordinated set within the Classifier Administration console. Existing policies can be cloned to allow fast creation of policies for new target communities. The end-user interface and feedback dialogues are customisable between policies, allowing the controlled expansion of labelling to multiple communities with differing needs and security policies.

Fig 3: Rules Wizard



- **Rule-based Checks & Customisable Feedback**  
The content of all feedback provided to end-users is customisable from within the Classifier Administration console and supports intranet help links for delivering organisation-specific contextual guidance. Rules-based checks can be used to warn users or to prevent inappropriate actions, creating user awareness and providing enforcement of your security policy.
- **Label Interoperability**  
Label interoperability allows you to identify the embedded and visual markings used by other organisations that can be automatically mapped into your labelling scheme, providing labelling consistency across disparate organisations.
- **Infrastructure Compatibility**  
To maximise compatibility with your IT infrastructure, the deployment of your labelling policy can either be based on Active Directory or may be file-based. The Classifier products support the most common end-user environments, including Microsoft Office 2003, 2007 and 2010.
- **Flexible Auditing**  
Flexible auditing allows you to specify which events are audited, providing visibility of user activity and allowing analysis of user behaviours against policy objectives. This knowledge allows better targeting of security training and assessment of compliance to security policies.

**System Requirements - Software**

The Classifier Administration console is fully supported on the following platforms:

- Windows 7
- Windows XP SP 3 - x86
- Windows Vista

With the following prerequisites:

- Microsoft .NET 3.0 framework
- MMC 3.0 on Windows XP

**Try Before You Buy**

Evaluations are available for the Boldon James Classifier products. Contact your Boldon James representative or visit: [www.boldonjames.com](http://www.boldonjames.com)

**About Boldon James**

For over 20 years we have helped organisations with the most demanding and complex communication requirements manage sensitive information securely and in compliance with legislation and standards.

Our solutions extend the capabilities of Microsoft core infrastructure products to allow secure information exchange and in 2006 we were elevated to Microsoft Global Go-To-Market Partner. Boldon James is a wholly-owned subsidiary of QinetiQ, with offices in the UK, US, Australia and Europe, and channel partners worldwide.