

# Nlyte Alarms

## Real-time data collection, facilities & environmental alarms

### DATA SHEET

For real-time data collection, facilities & environmental alarms, now IT and Facilities staff can better monitor, manage and quickly react to physical IT infrastructure managed by the Nlyte data center infrastructure management (DCIM) solution. In the event of a pending issue, Nlyte Alarms generates a notification via an SMS or Email which can be sent to a group, department or individual. Remarkably easy to configure, Nlyte Alarms requires no programming experience to configure - just drag and drop. Combining traditional SMS and email notification methods, Nlyte Alarms also has a highly visual set of indicators for the Floor Plan view within the Nlyte DCIM solution.

**Nlyte Alarms reads real-time data for any specified facilities or environmental asset.**

#### Features of Nlyte Alarms:

- **Management** - Customizable automatic alarms can be generated when user-defined conditions are reached. Users can view the alarm details, acknowledge the alarm, escalate, add notes and close the alarm.
- **Alarm Configuration**
  - **Drag and Drop Configuration** - Visual programming based on the 'Blocky Editor' which pulls blocks from a library to create the rules and types of alarm needed. Alarm levels can be set for critical/major/warning/informational settings.
  - **Bulk Configuration** - Ability to copy alarm settings from 1 across to many (e.g. 99) devices or sensors.
- **Notification** - Threshold and limit levels can be communicated in a number of ways enabling prompt resolution and escalation to senior personnel when necessary, wherever they are:
  - **Floor Plan Notification** - Visual flashing whilst in the Nlyte Floor Plan module for room locations. Cabinets on the floor plan will be outlined in different glowing color that indicates a critical/major/warning/info alarm.
  - **SMS Notification** - Can be sent to a group, department, or individual(s).
  - **Email Notification** - Can be sent to a group, department, or individual(s).
  - **Open Alarm Count** - User will also see counts of open alarms within the Alarm module within Nlyte.

#### Benefits of Nlyte Alarms:

- Enable smart, real-time decision making with visibility into power utilization and environmental data
- Brings Facilities insight to IT
- Accelerates reaction time to data center systems
- Ability to track and monitor both Facilities and IT pertinent information
- Improve identification of technical problems and failure patterns
- Resolve problems more quickly with impact analysis
- Custom alarm creation gets the right alarm to the right individual or team - depending on their needs

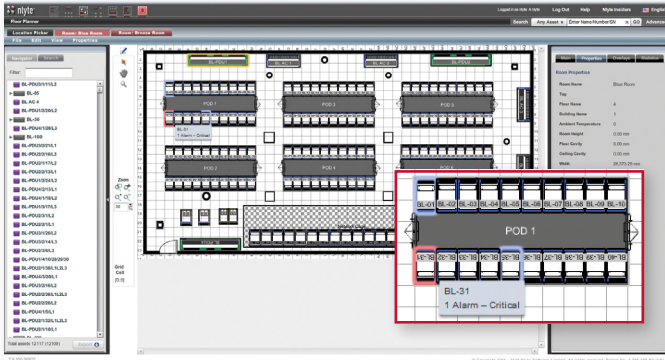
#### Sample Attributes read and alarmed on:

- Load
- Power
- Total Energy
- Voltage
- Temperature
- Humidity
- Door Open / Close
- And more...

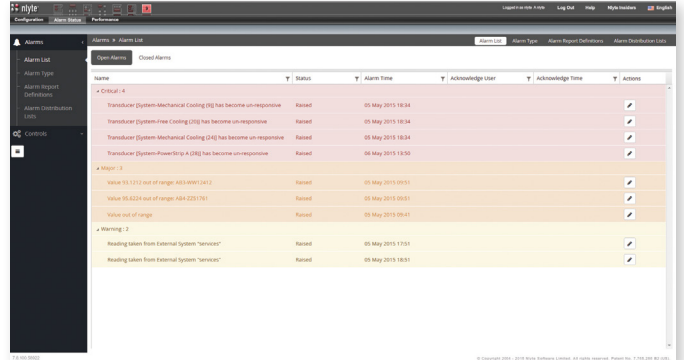
#### Supported Protocols:

- SNMP
- Modbus
- OPC
- Flatfile
- BacNet
- Restful API [any XML Endpoint]
- RDBMS
- Wired and wireless sensors

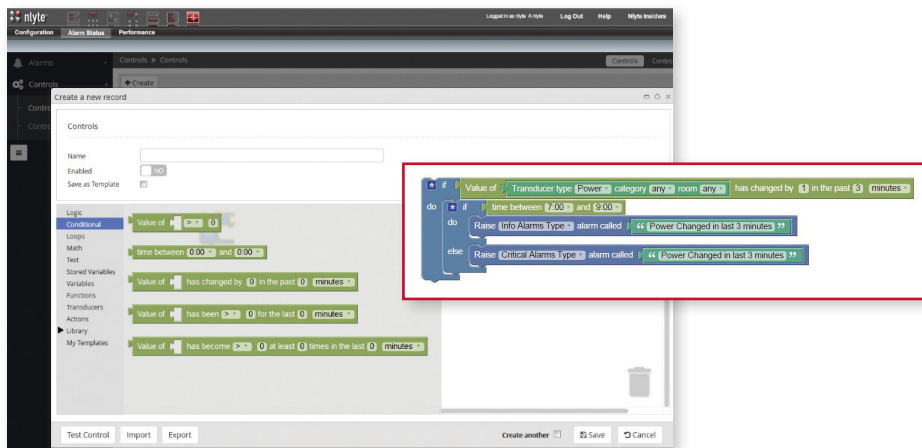
# Nlyte Alarms



Floor Plan Notification



Alarm Status (Open) - Users can update alarms status, insert notes, as well as close the alarms and view a count of open alarms for notification



Set up control (alarm rule) - Users can easily drag and drop to set up rules and condition for raising an alarm

## ABOUT NLYTE

Nlyte is the leading software company that automates the management of data center infrastructure (DCIM). Many of the world's largest and most sophisticated data centers use Nlyte to become more agile, reduce costs and operate more efficiently. Founded in 2004, Nlyte provides a comprehensive and proven DCIM solution with a modern, web-services architecture. With Nlyte, customers can easily manage all their existing data center processes, resources, policies, assets and interrelationships. For more information, visit [www.nlyte.com](http://www.nlyte.com).

Copyright © 2015, Nlyte Software Limited. All rights reserved.

Nlyte is a registered trademark and Nlyte Software is a trademark of Nlyte Software Limited. All other brands or product names are the property of their respective holders. Information in this document is subject to change without notice and does not represent a commitment on the part of the vendor.

JUNE 2015

## FOR MORE INFORMATION

- Contact Us: [info@nlyte.com](mailto:info@nlyte.com)
- Visit Us: [www.nlyte.com](http://www.nlyte.com)
- Call: **1.650.642.2700**  
**+44 (0) 208 877 7200**